

Sil.Flex™ Stoma Pad

Innovative cushion absorbs pressure at stoma sites

respiralogics™

Stoma sites may become sensitive or compromised due to constant pressure or movement of the tracheostomy tube and flange against surrounding tissue. The Sil.Flex Stoma Pad is ergonomically designed to cushion the area between the flange and the stoma site, reducing movement and pressure at the site. The contoured surface of the Stoma Pad provides a stable, comfortable interface between the flange and the patient's neck. Sil.Flex Stoma Pads are made of medical grade silicone encased in polyurethane. Hypoallergenic and latex-free, each sterile pad is individually packaged and intended for single patient application. The Sil.Flex Stoma Pad is available in three sizes, accommodating small infants to large adults.

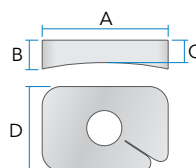


The Sil.Flex Stoma Pad may be used in critical care units, operating rooms, special procedure units as well as alternate care facilities and home care. Use of the Sil.Flex Stoma Pad may assist in reducing irritation at the stoma site and stabilizing the tracheostomy tube.

Sil.Flex Stoma Pads enhance patient comfort with all brands and styles of tracheostomy tubes. Danny Ties™ may be used in combination with the Sil.Flex Stoma Pad to provide a secure fit of the tracheostomy tube.

Specifications

Product Code	Size	A Length (mm)	B Edge (mm)	C Center (mm)	D Width (mm)	Tube Size (mm)
SP01	1	35	5.0	3.0	30	≤ 9.0
SP02	2	45	5.0	3.0	38	≥ 9.0
SP03	3	45	8.5	7.0	38	≥ 9.0



Ordering Information

SP01B	Sil.Flex Stoma Pad, Size 1 (10/box)
SP01	Sil.Flex Stoma Pad, Size 1 (40/case)
SP02B	Sil.Flex Stoma Pad, Size 2 (10/box)
SP02	Sil.Flex Stoma Pad, Size 2 (40/case)
SP03B	Sil.Flex Stoma Pad, Size 3 (10/box)
SP03	Sil.Flex Stoma Pad, Size 3 (40/case)

Companion Products

DWL105001	Danny Ties, Small
DWL105002	Danny Ties, Medium
DWL105003	Danny Ties, Large
DWL105005	Jimmy Proof Straps™

Respiralogics products are available from Respiralogics and our specialty respiratory care distributors. For our latest product information visit www.respiralogics.com or email us at information@respiralogics.com.



Respiralogics is a Global Respiratory Solutions, Inc. Company
3545 Airway Drive, Suite 104 • Reno, NV 89511 • 775 954 0160 • www.respiralogics.com

© 2017 Respiralogics. All rights reserved. Respiralogics and the Respiralogics logo are trademarks of Global Respiratory Solutions, Inc. Sil.Flex is a trademark of Galemed Corporation. Danny Ties and Jimmy Proof Straps are trademarks of Leckie Medical Products, Inc. CSP00.5



FEATURES

Unique sizes and shapes to fit differently shaped necks and tracheal tube sizes

Available in three sizes, accommodating small infants through large adults

Center opening design allows for placement without tube removal and reduces time for application

Contoured surface reduces contact with stoma site

Flat surface conforms with tube flange

Hypo-allergenic, latex free, medical grade silicone gel pad encased in polyurethane

Size clearly identified on each stoma pad

Center opening reduces direct tube contact

Individually packaged, sterile and easy to apply

14-day use, easily cleaned at patient bedside